



# INAIR

Indiana Association for  
Institutional Research

## 39<sup>TH</sup> ANNUAL CONFERENCE

MARCH 31 - APRIL 1, 2025

---

# Conference Program



1399 N Notre Dame Ave  
South Bend, IN 44617

McKenna Hall  
[experience.nd.edu](http://experience.nd.edu)

# Welcome Message from President & VP

Dear INAIR Colleagues,

We are thrilled to welcome you to the 39th Annual INAIR Conference at the University of Notre Dame! This year, we gather under the theme "Fighting 'IR'ish"—a nod to our host institution's Fighting Irish mascot and a recognition of the vital role IR professionals play as advocates for using data as a force for good.

Over the next two days, we look forward to engaging discussions, insightful presentations, and meaningful networking opportunities. We're excited to reconnect with familiar faces and welcome new colleagues as we share best practices and innovative ideas in institutional research, assessment, and decision-support.

We extend our heartfelt gratitude to our sponsors, whose generous support makes this conference possible:

- Gold Sponsor: Explorance
- Silver Sponsor: Datatelligent
- Bronze Sponsor: Invoke Learning

We also want to acknowledge the incredible efforts of the INAIR Executive Board and volunteers who have worked diligently to make this event a success. Their dedication ensures that our conference continues to provide valuable professional development and collaboration opportunities for our members.

If you have any questions or suggestions throughout the conference, please don't hesitate to connect with us or any INAIR Board member. We hope you have a fantastic experience and leave feeling inspired and empowered in your work.

Thank you for being part of INAIR 2025—let's make this a great conference!

Best,

**Doug Anderson**  
 INAIR President  
 Indiana University, Bloomington  
 Director of Enrollment Planning and Research  
[dkanders@iu.edu](mailto:dkanders@iu.edu)

**Adrea Hernandez**  
 INAIR Vice President and Conference Chair  
 University of Notre Dame  
 Executive Director, Institutional Research  
[aherna28@nd.edu](mailto:aherna28@nd.edu)



*Doug Anderson, INAIR President*



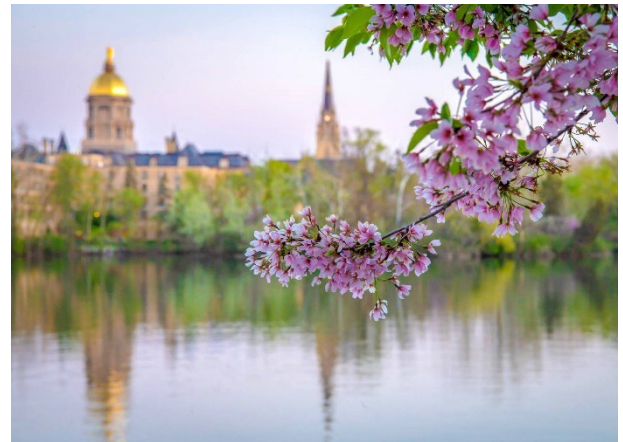
*Adrea Hernandez, INAIR Vice President & 2025 Conference Chair*



ND-guest (no password required)



Daily parking permit codes provided via email prior to arrival. If you need to request a permit code, please see or email Adrea Hernandez (aherna28@nd.edu).



## Special Thank You to Our Sponsors

Gold Sponsorship



Visit: [www.explorance.com](http://www.explorance.com)

# Get Better Feedback Insights, See Results Quickly

Explorance's software solution makes it easy to collect and analyze feedback from students and employees. Then, use feedback analytics and AI to turn insights into action that help you close the loop and boost engagement, retention, and organizational growth.

#### WHAT YOU SHOULD KNOW

### Feedback Data that Delivers Results Worldwide



**22.75M**

People Heard



**500M+**

Survey Forms Completed



**2B+**

Survey Data Points Collected

## Silver Sponsorship



*Smarter Insights,  
Better Outcomes*

# Datatelligent

- ✓ **Cloud-based Data Platform** - Unified data, scalable, ease of use
- ✓ **AI & Analytics Solutions** - Gain insights that drive action
- ✓ **Industry-Specific Expertise** - Tailored solutions for higher education

[www.datatelligent.ai](http://www.datatelligent.ai)

## Bronze Sponsorship



WE BELIEVE THAT HIGHER EDUCATION DESERVES  
SOLUTIONS THAT MAKE A REAL DIFFERENCE

**Invoke Learning does just that. Even more, we work toward a future in which every educational institution is empowered to satisfy the unique needs, pace, and goals of all learners, everywhere.**

Visit: [www.invokelearning.com](http://www.invokelearning.com)

# Campus Venues

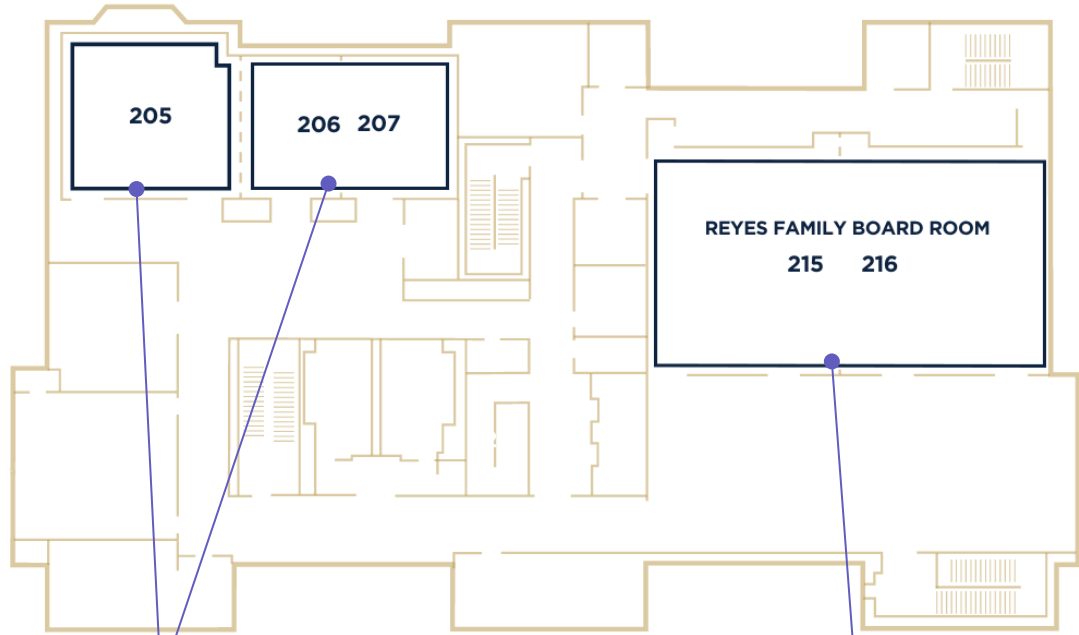
Morris Inn:  
Campus Hotel

McKenna Hall:  
Conference Space



# McKenna Hall

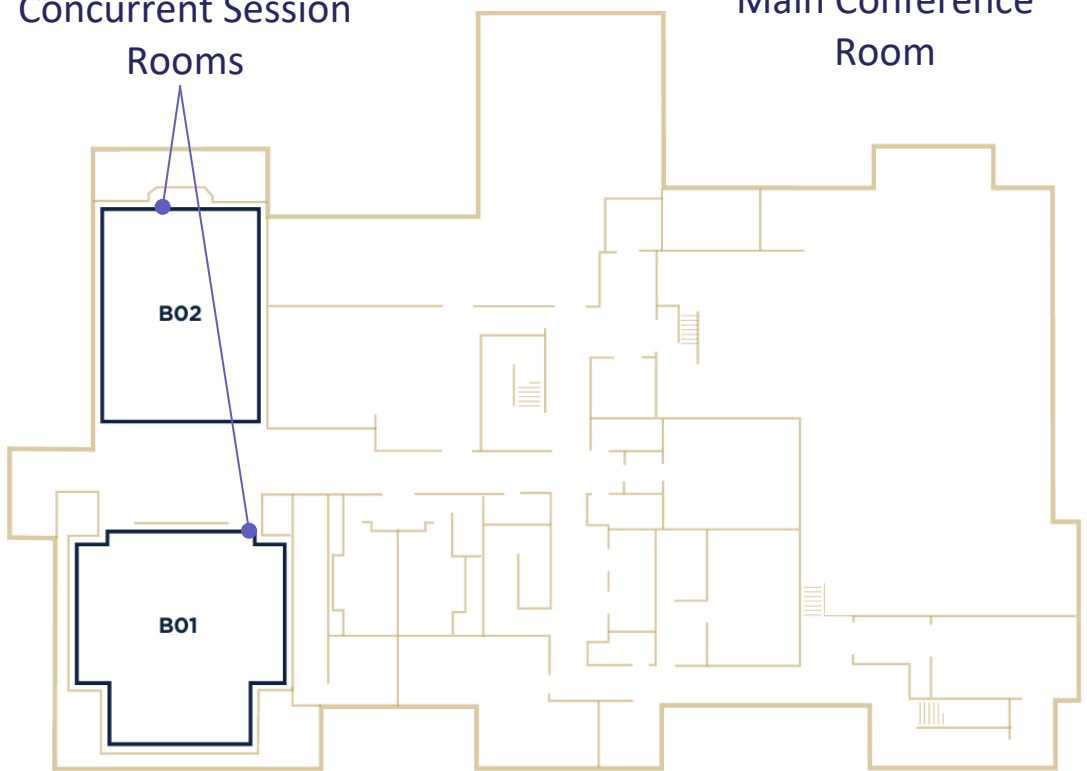
Second Level



Concurrent Session Rooms

Main Conference Room

Lower Level





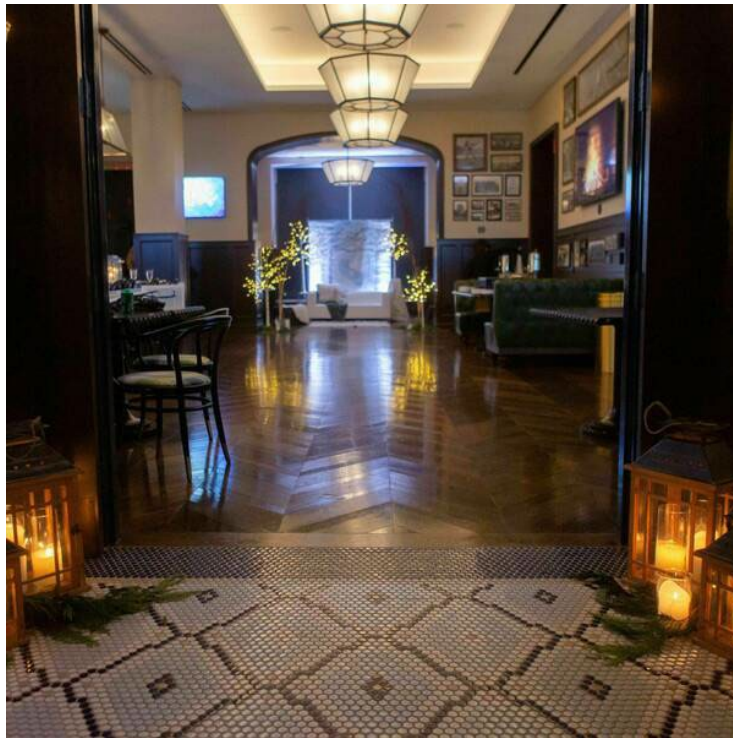
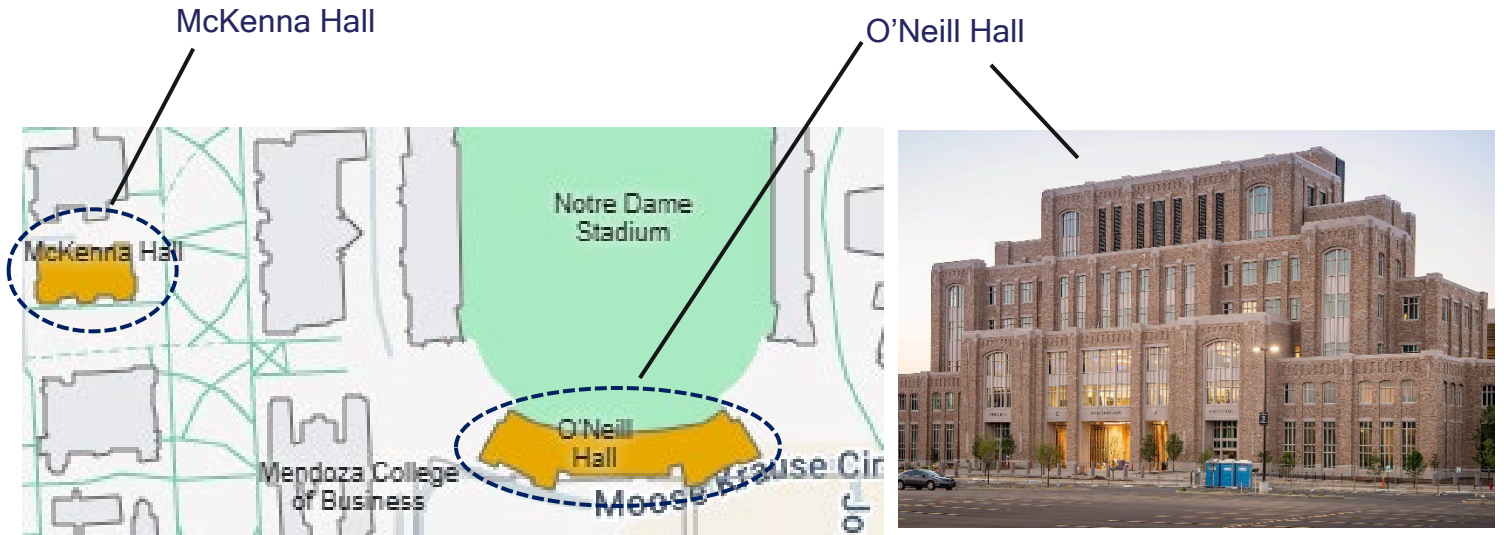
## Campus Parking

If you need daily parking and are **not staying at Morris Inn**, you may use the provided permit code to enter the **Visitor Lot located on the west end of the Walsh Architecture parking lot**. If this Visitor Lot reaches capacity, you can use the provided permit code to park in **any non-reserved space within the Joyce, Compton, or Walsh Architecture lots**. If you did not receive a permit code prior to arrival, please see or email Adrea Hernandez ([aherna28@nd.edu](mailto:aherna28@nd.edu)).





### Thursday Evening, Business Meeting and Reception Foley's, O'Neill Hall (south side of Notre Dame Stadium, 4<sup>th</sup> floor)



# Monday, March 31 – Conference Day 1

## Conference Registration Opens

7:45 am | Room 215/216

## AIR/IPEDS Workshop: IPEDS Data Tools 8:00 am – 11:30 am | Room 206/207

The IPEDSuploadables package has streamlined the last mile of the IPEDS reporting process for many schools. It's time to give the package an upgrade, by adding support for new surveys and/or new types of institutions. Join us to have a direct impact on the upgrade process! This collaborative workshop is designed to have participants map a workflow and begin to produce actual changes to the package. Contributions of various types are welcome, including coding (using mostly dplyr in R) and non-coding (prioritization, roadmaps, interpreting IPEDS instructions, defining starting data structures / testing requirements, reviewing documentation, providing user perspectives). Through this process, participants will learn and apply lessons about modular code architecture, IPEDS documentation, and validating code using unit tests. If you know some R, have some familiarity with IPEDS, or have that great IR attention to detail and curiosity to learn new things, join us!

## Newcomers Session

8:00 am – 11:30 am | Room 205

Are you new to the Indiana Association for Institutional Research (INAIR) or attending our conference for the first time? Join us for the Newcomer Orientation Session, designed to introduce you to the INAIR community and help you maximize your conference experience. This interactive session will provide an overview of INAIR's mission, resources, and opportunities for professional development. You'll have the chance to connect with experienced members, learn about best practices in institutional research, and discover how to get involved in INAIR activities. Whether you're new to the field or a seasoned professional, this session offers valuable insights and networking opportunities to enhance your role in institutional research.

## Campus Tour

10:30 am – 11:45 am | McKenna Hall

Wear your walking shoes and enjoy a guided tour of the lovely Notre Dame campus. Meet in front of McKenna Hall (Notre Dame Ave side) and look for the volunteer with the INAIR sign. The tour will cover 1.5 miles of campus and will end back at McKenna Hall.

## Lunch and Welcome

12 noon | Room 215/216

### Enrollment Crystal Ball: Projections Simplified and Sophisticated

Room 206/207

*Bridgett Milner & Sasha Haywood, Indiana University Bloomington*

Accurately predicting fall enrollment is crucial for effective planning and decision-making in higher education. This session explores a range of methodological approaches to enrollment projections, from simple ratio models to advanced logistic regressions. We'll discuss how ratio-based models offer quick insights and are ideal for short-term estimates, while more complex techniques, such as logistic regression, can factor in key variables like scholarship dollars to provide deeper, data-driven forecasts. Attendees will learn the pros and cons of each approach and how to choose the best model for their institution's specific needs. Join us to discover how institutions can refine their enrollment forecasts to better align with strategic goals and make more informed decisions.

### Leveraging Web Scraping to Build Purdue's HP Awards Historical Database

Room 205

*Emilie Maurais, Purdue University*

This presentation outlines the process of building a comprehensive historical database of Purdue University's highly prestigious awards which can be quickly referenced and queried to answer time-sensitive questions from the university central leadership. The project involved extensive web scraping resulting in 96,468 records from 195 websites. We applied automated and manual processes to identify records affiliated with Purdue University and performed a comparative analysis against Academic Analytics records to detect any discrepancies. The audience can expect to learn about the process, findings, challenges and future actions for this project. It highlights the importance of combining automated and manual processes and cross-referencing multiple data sources. This project demonstrates the power of data in enhancing institutional knowledge.

### A Recipe for Broader Metadata: Purdue's Data Governance Reach with Data Cookbook

Room B01

*Stephanie Dykhuizen & Tyler J Ptak, Purdue University*

How can an institutional data office broaden its data governance tools to include more areas of a university? Resources are limited, so we use what we have to meet the needs of a diverse audience. With the inclusion of cooking analogies to make the session fun and engaging, we will explore Purdue University's innovative use of Data Cookbook to whip up a recipe for success. Through collaboration with non-traditional partners, we folded in Data Cookbook to document institutional processes and operations, creating a versatile approach that benefits more users throughout the university, including faculty. Our student assistants, acting as sous-chefs, made significant contributions to these projects. One of our undergraduate students will join this session to share his experience in our collaborative kitchen. Time will be allotted for discussion to ensure everyone leaves with a taste what can be achieved with a broader metadata strategy.

## Harnessing Machine Learning to Improve Student Recruitment Process

Room B02

*Tim Kish & Asawaree Kulkarni, Ivy Tech Community College*

As an open enrollment community college, Ivy Tech receives over 200,000 applications every year across 70 campuses and roughly half of them end up registering. Enrollment teams at each campus have limited recruitment specialists and they divide and process applications for outreach. With a predictive approach, our goal was to prioritize the applications of new first time or transfer students in the order of conversion likelihood. We studied student level predictors such as involvement, responsiveness and demographics and built a model using machine learning techniques. Our model provided a prediction accuracy of 88%, and the administration has found value thus far even early in deployment. As more and more machine learning models are incorporated into business processes, we anticipate organizations will face these practical challenges. In this presentation, we will share our learnings.

Breakout Session Two

2:00 pm – 2:45 pm

### MLY by Explorance

Room 206/207



*Michael Lee Jones, Solutions Engineering Manager, Explorance*

In this session, learn how Explorance MLY enhances student experience strategies by distilling valuable insights into student needs and expectations from qualitative feedback.

You'll see how MLY helps you: Categorize comments into topics specific to the student experience both inside and outside of the classroom; Organize, analyze, and act on qualitative feedback including sentiment analysis, crowdsourced recommendations, and alerts on pressing issues; Enable users to remove sensitive information such as personal names and abusive language while maintaining feedback insights with robust redaction capabilities

Explorance MLY is an award-winning AI-powered student voice platform, earning the QS Reimagine Education Awards Gold Award for AI in Education. Explorance MLY leverages machine learning to provide in-depth analysis of qualitative feedback by determining topic-specific sentiment analysis, identifying feedback patterns, and highlighting recommendations expressed on what to start, continue, or stop doing.

## Exploring AI Capabilities in Institutional Research: Insights Through Pop Music Analysis

Room 205

*Ryan Johnson & Christopher Sleppy, Ivy Tech Community College*

Artificial Intelligence (AI) is transforming Institutional Research (IR) by enhancing data analysis, visualization, and communication. This session demonstrates AI's potential using a pop music dataset to show how AI uncovers patterns, such as how tempo and danceability influence song popularity. All aspects, including data analysis, visualization creation, and report synthesis, will be performed live using the latest AI tools. These methods directly apply to IR tasks like retention modeling and equity analysis. Attendees will see how AI generates accessible outputs, including visualizations, whitepapers, presentations, and websites, to communicate insights effectively. A creative application, a pop song created from the analysis, will showcase AI's flexibility. The session also examines AI's limitations, such as data quality and ethical concerns like bias. By exploring these capabilities live, participants will gain actionable insights to enhance IR practices and foster innovation.

## The Power of Storytelling: Using Qualitative Research to Audit Policies and Advance Equity in Higher Education

Room B01

*Brooke Moreland, PhD Leading Social Change*

Storytelling through qualitative research provides a powerful approach to uncover the lived experiences of students, revealing disparities in policy implementation and resource allocation. Led by Brooke Moreland, PhD, Director of Learning & Design at Cinereach, this session demonstrates how narrative-driven inquiry can audit institutional policies, align strategic goals with student realities, and drive equitable resource distribution.

Participants will explore case studies and actionable methodologies to amplify underrepresented voices, bridge gaps between institutional intent and outcomes, and foster equity-centered decision-making. Designed for mid-level to senior administrators, this session equips attendees with practical tools to integrate storytelling into policy audits and strategic planning, creating inclusive and transformative learning environments.

## Explainable and Unbiased Predictive Analytics for Institutional Researchers

Room B02

*Rishika Samala, Tradara McLaurine, Gina Deom, Jesse Talley, Stefano Fiorini & Christina Downey, Indiana University*

With the rapid growth of analytical methodologies from both statistics and data science, the ethical and transparent application of algorithmic outputs in support of university operations and activities has become increasingly important and has generated concern in the higher education community. This session discusses effective participatory approaches that ensure actionability of analytics, support the production of explainable Artificial Intelligence and Machine Learning, and minimize and effectively address the risk of bias in advanced analytics. The session will close with an interactive discussion on what it means to provide effective, accessible, and unbiased application of advanced analytics in institutional research.

## Snack and Networking Break

**2:45 pm – 3:15 pm | 215/216**

### Breakout Session Three

**3:15 pm – 4:00 pm**

## One Report to Rule them All? Balancing Customization and Consolidation

Concurrent Session | Presentation/Paper | Room 206/207

*Bridgett J. Milner & Douglas K. Anderson, Indiana University Bloomington*

Decisionmakers at Indiana University have had access to a wide array of reports created by a variety of offices. This can be a great strength, a richness of resources. It can also be contradictory, even bewildering, and inefficient. After organizational changes implemented by new leaders, we now have a central Institutional Analytics team, plus data analysts embedded in campuses and departments. We are currently evaluating our reporting structures and environment, looking for duplications and inefficiencies, and seeking opportunities to streamline and consolidate. We have found times when centralizing reporting is compelling. Yet there are also times when it's imperative that teams and reports remain separate. We will present our insights and share how they can be applied to offices of any size, concluding with an audience discussion to tap into the collective wisdom of participants.

## Early Indicator, Lasting Impact: Predictive Analytics for Academic Achievement

Room 205

*Mary Tarsha & Connor O'Rear, University of Notre Dame*

How can institutions leverage pre-matriculation data to better serve students? This question, universal to all institutions, will guide our presentation. We will begin by discussing why properly identifying students who are likely to struggle in the classroom is crucial for delivering effective academic support. Next, we will outline how traditional approaches often rely on broad categories (e.g., first-generation students or Pell recipients), often misidentifying students who would thrive without additional support. These categorizations may also reinforce harmful narratives about students from certain backgrounds. To address these limitations, we developed a novel process using pre-matriculation data that excludes demographic variables to better identify first-year students who are most in need of support. In this session, we will share how our process, developed in collaboration with university partners, has informed more targeted and effective student support strategies.

## Tableau Tips and Tricks

Room B01

*Lindsay Boersma, Sasha Haywood Carissa Bullman & Alex Lastinger, Indiana University  
Bloomington*

In our analytic and reporting roles, it's critical that we share data with decision makers in a way that is easy and quick for them to interpret. Sometimes that is easier said than done and we spend far too much time doing tedious work because we simply don't know there's an easier or faster way to do it. We have a wide range of Tableau experience on our team (puppy bowl to national championship level) but we've all picked up our own favorite work-arounds, tips, and tricks and we'd love to share some of our Tableau playbook with you as well as some of our best practices when it comes to data visualizations. (And celebrate a great football season for IU and ND!)

## Campus Politics: Cluster Analysis of Student Engagement and Political Views

Room B02

*Brendan Dugan & Jim Cole, Indiana University*

College campuses have long been a battleground for culture wars, ranging from anti-war and civil rights protests in the 1960s to encampment protests regarding the Israel-Palestine conflict, and state legislative actions regarding tenure and curricula. Yet, many large-scale surveys tend to avoid questions of political views or affiliation potentially leaving institutions in the dark on its relation to belonging, inclusion, and engagement. This session will report survey results from additional questions on the National Survey of Student Engagement in the spring of 2024, including students' intention to vote and their views on a number of social issues. Relationships between these views, student engagement, and belonging will be explored. This session will use statistical clustering to validate self-identified political views and demonstrate the process and advantages of the technique to reduce lengthy survey data into more manageable features and help identify student subgroups.

Business Meeting, Award Ceremony 4:15pm – 5pm | Foley’s, O’Neill Hall

Reception 5 pm – 6 pm | Foley’s, O’Neill Hall

Sponsored by



**Dinner on Your Own**

**6:00 pm**

## Tuesday, April 1 – Conference Day 2

### Coffee and Snacks

7:30 am – 8:15 am | 215/216 Prefunction Space

Sponsored by



Datatelligent

### IPDAG Meetup

7:30 am – 8:15 am | 215/216

Conference attendees from IPDAG and/or attendees from Indiana's two- and four-year public institutions are invited to a meetup in the main conference rooms 215/216 during the conference Coffee and Snacks. This gathering is intended to be an informal event to catch up with colleagues and make new connections. Brooke Kile, from the Indiana Commission for Higher Education, will be there to facilitate introductions and answer general questions about happenings at the Commission. Look for Brooke Kile.



**Breakout Session Four****8:15 am – 9:00 am****Strategic Foresight: A Tool for Planning for the Future You Want to See**

Concurrent Session | Demonstration/How-to | Room 215/216

*Brent Drake, The Gardner Institute & Adrea Hernandez, University of Notre Dame*

For most IR/IE professionals the levels of demand for state and federal compliance reporting as well as internal requests leaves them in a situation where they can only focus on what is immediately on fire. This constant scramble places us in a pattern of behavior that doesn't allow us to strategically plan ahead and help shape our institutions in manners that we feel are most beneficial. The national AIR board over the last year has worked with the ASAE's ForesightWorks program to incorporate strategic foresight efforts around key drivers of change in higher education and the IR profession to help plan for the association's future. In this concurrent session members of the board will introduce what strategic foresight work is, talk about some of the key drivers identified by ASAE and those identified by the board as most relevant for IR/IE professionals, and lead participants through a brief foresight exercise to help prepare them to use these tools on their own campuses.

**Using Bayesian Marginal Effects and Predictions in Institutional Research**

Concurrent Session | Presentation/Paper | Room 206/207

*David Dalenberg, Wabash College*

Institutional researchers often estimate models that can have awkward interpretations. For example, a logistic regression yields coefficients on the log-odds scale. Exponentiating somewhat eases interpretation, but it can still be challenging for a general audience. If we move to the original scale of the response variable, we can talk in terms of probability - a concept that most people find easy to understand. Also, if we work within a Bayesian framework, the interpretation becomes even more natural. In this presentation I will discuss the reasons that working on the original (mean) scale of the response variable can be advantageous, and I will give a very brief overview of Bayesian statistics. I will spend the bulk of the presentation demonstrating specific applications for institutional research data using my R package "bayesMeanScale," including ways of computing marginal effects and predictions, along with the methodology for testing interaction effects on the mean scale.

**Facilitating Data Collection, Internal Processes, and Data Management using Microsoft Power Platform**

Room 205

*Jordan Meyer, Purdue University*

When internal processes begin to exceed what can be effectively managed through a simple web form, a wide range of options exist for creating more tailored solutions. Microsoft Power Platform is one such option that is already readily available, albeit often underutilized, on many college campuses. It represents a cost-effective and highly flexible method of managing data for internal processes, integrating seamlessly with many everyday tools that are already in widespread use (e.g., Outlook, Excel, and Power BI) to eliminate redundancies and reduce the number of manual steps. This presentation provides a case study of the implementation of Microsoft Power Platform for three internal processes (student projects, award applications, and grant proposals) at Purdue University's John Martinson Honors College, including a practical discussion of the benefits and challenges.

## Investigating Academic Burnout and Stress Management Among Graduate Students: Insights from GradSERU Survey

Room B01

*Ozgur Kayaalp, Indiana University Bloomington*

How do academic and institutional factors influence academic burnout and stress management among graduate students, and how do these factors relate to overall student well-being and academic success? This investigation goes into the dynamics between institutional support behavior of higher education institutions and the academic stressors and demographic factors that may impede students' achievement. This study uses data from the gradSERU 2024 survey, including responses from 33,739 graduate students across 14 public research universities in the United States. The study employs structural equation modeling to understand and predict the effects of academic, financial and emotional stressors on student burnout and stress management, either directly or indirectly. Thereby, the research aims at 1) providing empirical evidence for why more should be done universities in this area. 2) facilitating the creation of interventions aimed at preventing stress and burnout among graduate students.

## Two Roads Diverged in a Yellow Wood: IR Career Pathways and IR Succession Planning

Room B02

*Brooke Kile, Indiana Commission for Higher Education*

"Two roads diverged in a yellow wood," wrote Robert Frost in his poem 'The Road Not Taken' (1916). Institutional Research, like most careers, offers two distinct pathways: the individual contributor road versus the managerial road. Depending on the size of the institution, these roads can run parallel for short periods of time or even cross each other; however, the paths are distinct. This session will offer attendees a chance to evaluate (or re-evaluate) attributes of both roads: the initial steps, journey length and scenery along the way, as well as the ending destination. Early-to-mid-career attendees will leave with personal understanding of which road would be their 'one less traveled by". Later-career and/or executive attendees will come away understanding how to achieve the optimal portfolio of IR roles at their institution and how to begin thinking about successful succession planning at their organization.

## Breakout Session Five

9:15 am – 10:00 am

**Navigating Higher Education's Transformative Era with Data-Driven Insights**

Room 206/207

*Dr. Steven Wightkin, Chief Product Officer, Datatelligent**Angie Bauman Power, Director of Customer Success for Higher Education, Datatelligent*

Higher education is undergoing a period of unprecedented transformation. The impact of COVID-19, ongoing federal and societal uncertainty, and the rapid rise of artificial intelligence are driving a shift in how institutions operate. Colleges and universities face growing pressure to increase efficiency, enhance accountability, and remain competitive in an evolving workforce landscape. In response, institutions must embrace agility, flexibility, and data-driven decision-making to navigate these challenges effectively. At Datatelligent, we see firsthand how institutions leverage analytics to streamline operations, improve student outcomes, and adapt to changing market demands.



This session will explore the top trends shaping higher education today and how institutions can harness the power of data to remain resilient. We will discuss how Datatelligent's unified data platform and standardized solution engines help colleges and universities consolidate data, generate actionable insights, and optimize key areas such as admissions, enrollment, and retention.

**Navigating Increased Data Restrictions in a FAFSA Simplification World**

Room 205

*Mick Lindvay & Tim Escue, Ivy Tech Community College*

A focused discussion regarding the approach taken by Ivy Tech Community College to uphold and protect the increased data restrictions imposed by the FAFSA Simplification Act. We will discuss the FAFSA and the recent changes made to it by the FAFSA Simplification Act, examine the difference between FAFSA data and FTI data received on the ISIR, and share strategies implemented to ensure FTI data is not misused.

**The Business Intelligence Files: A Detective's Journey into Data Warehousing**

Room B01

*Melissa Haney & Lydia Rowles, Ivy Tech Community College*

Embark on a detective-themed journey into Business Intelligence (BI) data warehousing, where we'll unravel the complexities of designing dimension and fact tables, streamlining ETL processes, and implementing automated data pipelines. This session emphasizes the significance of robust data engineering practices, scalable solutions, and meticulous documentation. Attendees will gain actionable insights to enhance data integration, governance, and analytics within their institutions.

## Please, Insult My Intelligence! Why IR Professionals Must Connect-the-Dots

Room B02

*Brooke Kile, Indiana Commission for Higher Education*

In the 2011 movie, 'Margin Call', the CEO (played by Jeremy Irons) says to a young analyst, "Speak as you might to a young child. Or a golden retriever." As data professionals, many of us have advanced degrees and specialized technical skills requiring years of education and experience. Not to brag, but we're smart people. Unfortunately, this very attribute can cause us to undersell our value and the value of our work when we don't explicitly connect the dots for institutional leaders.

One strategy institutional data leaders and data analysts can employ to message more effectively to campus leadership is to become unafraid of insulting intelligence by 'connecting the dots'. Attendees will actively participate in transforming data examples into actionable insight by employing the 'connect-the-dots' strategy across different topics, institutional audiences, and institutional characteristics.

### Brunch

**10:00 am – 11:00 am | Room 215/216**

### Closing Keynote

**11:00 am – 12:00 pm | Room 215/216**

## Stepping It Up with Responsible AI

*Dr. Nitesh Chawla*

Nitesh V. Chawla is the Frank M. Freimann Professor of Computer Science and Engineering at the University of Notre Dame. He is the Founding Director of the Lucy Family Institute for Data and Society. He also holds concurrent faculty appointments in the Department of Applied and Computational Mathematics and Statistics in the College of Science and the Department of Information, Technology, Analytics and Operations in the College of Business.



**Conference Concludes 12:00 pm – Safe travels!**

### Executive Board Meeting (Closed)

**12:30 pm – 2:00 pm | Room 201**

# INAIR 2025 INAIR Members

## By First Name and Institution

A.J. Antonelli, Marian University  
 Aaron Olson, Indiana Commission for Higher Ed  
 Adrea Hernandez, University of Notre Dame  
 Alex Lastinger, Indiana University-Bloomington  
 Alison Lanski, University of Notre Dame  
 Alison Winiarski, Purdue University  
 Amanda Bartley, Indiana University-Bloomington  
 Amanda Purcell, Ivy Tech-Lawrenceburg  
 Amia Foston, Butler University  
 Amy K. Ribera, Indiana University-Indianapolis  
 Andrea Hanger, Ivy Tech Community College  
 Andrea Ingle, Indiana University-Indianapolis  
 Annie Kearns Davoren, University of Notre Dame  
 Asawaree Kulkarni, Ivy Tech Community College  
 Ashlesha Pawar, Purdue Northwest  
 Barb Dobbs, Indiana University-Indianapolis  
 Ben Adams, Indiana University-Online  
 Bennu Guntoro, Indiana University-Indianapolis  
 Brandon Signorino, Butler University  
 Brandy Rypma, University of Notre Dame  
 Brendan Dugan, Indiana University-Indianapolis  
 Brent Drake, Gardner Institute  
 Brian Collins, Indiana University-Indianapolis  
 Bridgett Milner, Indiana University-Indianapolis  
 Brooke Kile, Indiana Commission for Higher Ed  
 Caleb Grubb, Ball State University  
 Carissa Bullman, Indiana University-Bloomington  
 Carolyn Simpson, Valparaiso University  
 Casey Marks, Purdue University  
 Cassandra Grove, Indiana University-Indianapolis  
 Chelsie Deatrck, Indiana University-Online  
 Christine Henderson, St. Mary of the Woods College  
 Christopher Sleppy, Ivy Tech Community College  
 Clif Marsiglio, Indiana University-Indianapolis  
 Cole Heady, Ball State University  
 Connor O'Rear, University of Notre Dame  
 Cory Vought, Ivy Tech Community College  
 Cyndi Belmarez, University of Notre Dame  
 Dale Pietrzak, Vincennes University  
 Dana Schrader, University of Notre Dame  
 Darren Henderson, Calumet College of St. Joseph  
 David Dalenberg, Washbash College  
 David Robledo, Purdue University  
 Diana Hooten, Indiana State University  
 Doug Anderson, Indiana University-Bloomington  
 Drew Miller, Ball State University  
 Edwin Welch, Taylor University  
 Emilie Maurais, Purdue University  
 Gillian Leonard, Purdue Northwest  
 Greg Tittelbaugh, Indiana University-Indianapolis  
 Gregory Johnson, University of Southern Indiana  
 Gwen Hefty, University of St. Francis  
 Jake Burns, Independent Colleges of Indiana  
 Janice Childress, Indiana University-Indianapolis  
 Jeffrey Schieb, Purdue Northwest  
 Jennifer Holscher, Vincennes University  
 Jenny Petersen, University of Notre Dame  
 Jesse Talley, Indiana University-Indianapolis  
 Joe Russo, Indiana University-Bloomington  
 Jonas Smith, Marian University  
 Jordan Gooch, Purdue University  
 Jordan Meyer, Purdue University  
 Joseph Dominiak, Purdue Northwest  
 Joseph Finke, Ball State University  
 Julie Sisco, Saint Mary's College  
 Justin Turpen, Ivy Tech Community College  
 Ken Pattillo, Indiana University-Indianapolis  
 Kendall Smith, University of Notre Dame  
 Kimela Meeks, Vincennes University  
 Kristi Renshaw, Vincennes University  
 Laura Daily, Butler University  
 Lindsay Boersma, Indiana University-Bloomington  
 Lydia Rowles, Ivy Tech Community College  
 Maggie Dalrymple, Indiana State University  
 Mandy Hoadley, Indiana University-Online  
 Mary Beth Mitchell, Indiana University-Indianapolis  
 Mary Tarsha, University of Notre Dame  
 Melissa Haney, Ivy Tech Community College

Melizza Zygmunt, Valparaiso University  
 Micah Lupa, Purdue University  
 Michael Ramos, Purdue Northwest  
 Michelle Clements, Indiana University-Online  
 Mick Lindvay, Ivy Tech Community College  
 Mike Nugent, Butler University  
 Mike Sauer, Indiana University-Indianapolis  
 Molly Amstutz, Purdue University  
 Nick Mundell, Indiana University-Indianapolis  
 Nikki Van Volkenburgh, Indiana U. -Indianapolis  
 Oniffe Grizzle, Indiana University-Indianapolis  
 Ozgur Kayaalp, Indiana University-Indianapolis  
 Pam Johnson, Saint Mary's College  
 Pedro Huet Lopez, Indiana University-Indianapolis  
 Rachel Dark, Purdue University  
 Ram Marupudi, Indiana University-Indianapolis  
 Rishika Samala, Indiana University-Indianapolis  
 Robbie Janik, Indiana University-Indianapolis  
 Robert Morse, Ivy Tech Community College  
 Ronald Gilbert, Indiana University-Indianapolis

Ryan Johnson, Ivy Tech Community College  
 Sabrina Andrews, Indiana University-Indianapolis  
 Sabrina Tanner, Purdue University  
 Samantha Turley, Ivy Tech Community College  
 Sasha Haywood, Indiana University-Bloomington  
 Sharon Wavle, Indiana University-Bloomington  
 Stefano Fiorini, Indiana University-Indianapolis  
 Stephanie Dykhuizen, Purdue University  
 Stephanie Martin, Purdue University  
 Stephen Czenszak,  
 Tim Escue, Ivy Tech Community College  
 Timothy Chow, Rose-Hulman Institute of Technology  
 Timothy Kish, Ivy Tech Community College  
 Tradara McLaurine, Indiana University-Indianapolis  
 Tyler Ptak, Purdue University  
 Xiaoxu Shan, Indiana University-Indianapolis



# INAIR 2024-25 Executive Board

## **President, Doug Anderson**

*Indiana University, Senior Director of OEM Planning & Research*

## **Vice President and Conference Chair, Adrea Hernandez, PhD**

*University of Notre Dame, Executive Director, Institutional Research*

## **Immediate Past President, Amy Ribera, PhD**

*Indiana University School of Medicine, Director of Research and Evaluation*

## **Treasurer, Jake Burns**

*Independent Colleges of Indiana, Director of Policy & Research*

## **Secretary, Jesse Talley**

*Indiana University Indianapolis, IUI Campus Manager of Institutional Effectiveness*

## **At-Large Member for Conference Planning, David Robledo**

*Purdue University, Executive Director of External Data Analytics*

## **At-Large Member for Conference Planning, Robert Morse**

*Ivy Tech Community College, Director of Assessment*

## **At-Large Membership Chair, Stephanie Martin**

*Purdue University, Program Data Analyst*

## **At-Large Web Administrator Chair, Jennifer Holscher**

*Vincennes University, Director of Institutional Research*

## **ICHE Liaison, Brooke Kile**

*Indiana Commission for Higher Education, Associate Commissioner for Business Intelligence*

# Local Restaurants & Eateries

## Walking Distance

**Rohr's** \$\$ - \$\$\$  
American Food

<https://morrisinn.nd.edu/dine-with-us/rohrrs/rohrrs-menu/>  
1399 N Notre Dame Ave

**Bru Burger** \$ - \$\$  
Burgers and Bar

<https://www.bruburgerbar.com/location/bru-burger-bar-south-bend-in/#menus>  
1234 N Eddy St Suite 111

**O'Rourke's Public House** \$ - \$\$  
Irish Pub and Food

<https://www.orourkessouthbend.com/menus>  
1044 E Angela Blvd #103

**Traditions** \$\$ - \$\$\$  
Italian & American Food

<https://www.traditionsnd.com/>  
1140 E Angela Blvd

**Brother's Bar & Grill** \$ - \$\$  
Bar Food & Grill

<https://www.brothersbar.com/menu-20>  
1234 N Eddy St Suite 125

## Driving Distance

**The Lauber** \$ - \$\$  
American Food

<https://thelauber.com/menu>  
504 E Lasalle Ave Suite 2

**Cafe Navarre** \$\$\$  
Fine Dining

<http://cafenavarre.co/eat>  
101 N Michigan St

**Rocky River Tap and Table** \$ - \$\$  
American Food

<http://www.rockyrivertapandtable.com/>  
1032 E University Dr, Mishawaka

**Fiddler's Hearth** \$ - \$\$  
Pub Food

<https://fiddlershearth.com/kitchen>  
127 N Main St

